



Have you upgraded to the CorpAssay Module yet?

An increasing number of sites are now experiencing the benefits of this upgrade, including:

- A great range of ready-to-use reports, charts and analysis tools
- Streamlined QAQC workflows and practices
- Improved compliance, with rejected QAQC results isolated so that they are not used for analysis
- Reduction in backlog of assay data waiting to be imported

Contact your local support team to discuss upgrading today!

Training Update

acQure Data Extraction to Mapping & Modelling Systems (aQ107)

This training session provides an overview of some of the methods of acQure data export and how to access acQure data from mapping and modelling software packages. The session includes visualisation of acQure data (e.g. Google® Earth), use of acQure in different workflows, use of and interoperability of acQureDirect. The mapping and modelling software packages that will be demonstrated, simulated and/or used may vary in each training session. This session will also be on offer as part of the annual acQure Conference in Perth (Wednesday, 10th and Friday, 12th November).

Register Now for Coal Quality Training Session (aQ108)

The new Coal Quality training session (aQ108) is a one day session designed for database managers, users and potential users of the new Coal Corp Quality module. This 'hands on' training session utilises a generalised coal quality workflow to explain coal quality analytical techniques, the splitting



and compositing of samples at all stages of the workflow, and the management of coal quality data within the acQure Data Model (ADM). This session will also be offered during the annual acQure Conference in Perth (Wednesday, 10th November).

acQure Manager Accreditation – Coming Soon! (aQ202)

If you already have acQure Practitioner accreditation, you will soon have the opportunity to upgrade your accreditation to acQure Manager. The acQure Manager (aQ202) training program takes a 'hands on' approach to developing and working

with the more advanced acQure features and applications, such as data model derivatives, script objects and client and server side functions. This session will be available early 2011, however you can register your interest to attend at the acQure website.

For further information or to register for any of the above sessions, visit the Learning menu on the acQure website www.acquire.com.au

SUPPORT PACKAGES

Support packages were developed to assist our support staff to 'visualise' the support issue being experienced by clients. Support packages have assisted our team to reduce the number of 'support steps' required to resolve cases as we can often quickly identify issues when presented with a complete picture, or snapshot, of the issue.

Support packages (*.qsupp) can be created to log issues of faulty objects or objects of interest. The contents of the support package enable the support person to create a test database and workspace where the object can be restored and tested to provide a solution. There are advantages that support packages have over sending raw objects to the support team. For example:

- Information on the database structure including the modules installed as well as the version of acQuire in use can be sourced from the support package. This information is vital in creating a database stub similar to the client database.
- Support packages carry relevant meta-data required by the object i.e. virtual fields, form definitions and reference information. This is the back-end structure that holds the object together, within acQuire.

Creating Support Packages:

The process of creating support packages is seamless and involves three steps after identifying the object of interest.

1. Right-click on the object and select **Properties**. This is the actual object in the workspace object tree (Figure 1) OR the object shortcut under shortcut bars (Figure 2).
2. In the **Properties** dialog, click on the **Build Support Package...** button located on the bottom left.
3. Choose a location to save the support package. The support package created (*.qsupp) can be compressed and emailed to the global support team at support@acquire.com.au

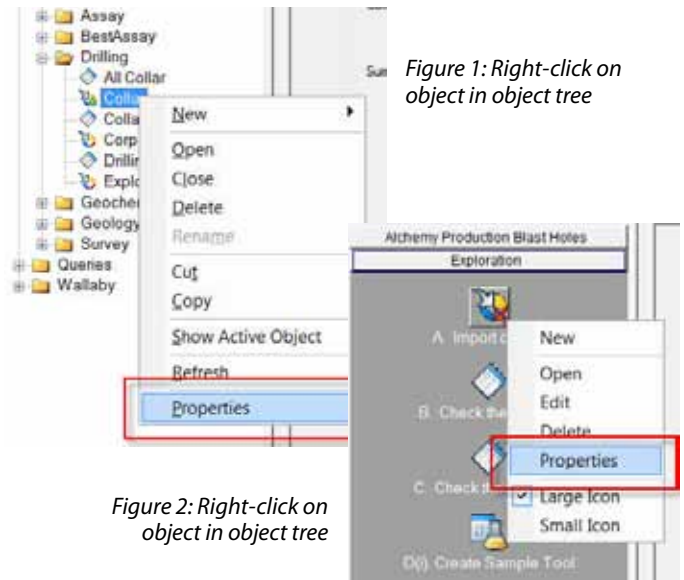


Figure 1: Right-click on object in object tree

Figure 2: Right-click on object in object tree



Figure 3: Properties dialog showing Build Support Package button

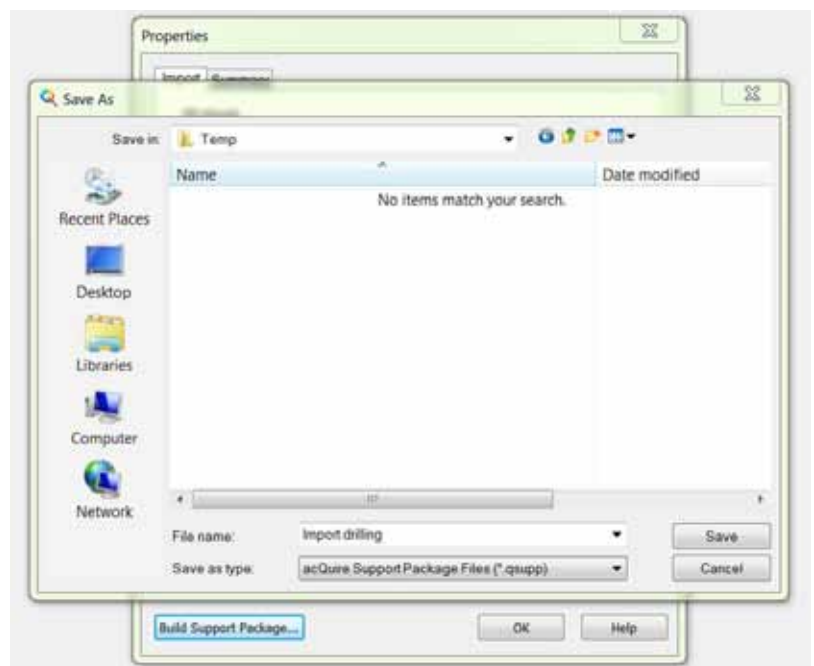


Figure 4: Save As dialog

SHORTCUT KEYS



In this issue we uncover a number of shortcut keys available to help in the navigation and general use of acQUIRE. These are listed below:

Shortcut Location	Option	Shortcut Key
Generic (available in most objects)	Cut	Ctrl+X
	Previous sheet	F7
	Next sheet	F8
	Copy	Ctrl+C
	Paste	Ctrl+V
	Open an object in Design Mode automatically	Shift + Double Click
	Toggle design/run mode	Ctrl+F5
	Switch to test mode	Ctrl+Shift+F5
File Menu	Save	Ctrl+S
	Print	Ctrl+P
Edit Menu	Refresh Workspace	F5
	Undo	Ctrl+Z
	Find	Ctrl+F
Additional Commands for Script Objects:	Replace	Ctrl+H
	Find Again	F3
	Make selection lowercase	Ctrl+U
	Make selection uppercase	Ctrl+Shift+U
	Comment selection	Ctrl+Shift+C
	Uncomment selection	Ctrl+Shift+R
	Select all (script)	Ctrl+A
	Displays white spaces	Ctrl + Shift +8
	Marks location (line) in script	Ctrl + F2
Additional commands for Form Objects:	Move forward to next marked location	F2
	Moves back to the previous marked location	Shift + F2
	Copy script with control variables	Ctrl + W
	Attach related table	Ctrl+R
Additional commands for Import Objects:	Repeat content of cell above	Ctrl+ '
	Insert column	Ctrl+I
	Delete column	Ctrl+D
	Append column	Ctrl+A
	Execute current sheet	F9
Additional commands for Data Entry Objects:	Execute	F10
	Back to insert mode	F4
	Move cursor to grid/panel	F2

Meet Your Local acQure Office

acQure's Brisbane office has been operating since September 2004 and provides support for companies on the Australian east coast region.



The staff that make up the acQure Brisbane office include:

- Jared Armstrong, Solutions Analyst
- Ros Pettersen, Regional Admin Coordinator
- Susan Alagic, Senior Geoscientific Data Analyst
- Melissa Wareham, Principal Geoscientific Data Analyst
- Ibo Mango, Geoscientific Data Techologist
- Tim Browne, Geoscientific Data Analyst

Contact details:

Suite 5, 36 Agnes Street
Fortitude Valley, QLD 4006
Australia
Phone: +61 7 3852 2400
Fax: +61 7 3852 2477

Top to bottom, left to right: Jared Armstrong, Ros Patterson, Susan Alagic, Ibo Mango, Melissa Wareham and Tim Browne

UPCOMING TRAINING 2010

acQure is offering a number of training seminars globally in the coming months. Details are as follows:

Seminar	Date	Venue
Lima Training Seminar	13th September - 17 September	Hotel Las Americas, Peru
Calgary Training Seminar	20th September - 24 September	acQure Calgary Office, Canada
Manchester Training Seminar	18 October - 22 October	acQure Manchester Office, UK
Perth Training Seminar	1st November - 12 November	Duxton Hotel Perth, Australia
Brisbane Training Seminar	6th December - 10 December	acQure Brisbane Office, Australia

For more details about the sessions offered at each seminar, visit www.acquire.com.au/training-schedule.asp

New Appointments



Rob Hearn – Senior Geoscientific Data Analyst

Rob Hearn has had a long relationship with acQuire as a client for more than 10 years. Rob graduated from the University of Johannesburg and began his time in the exploration and mining industry in his homeland of South Africa. Rob moved to Australia in March 2007 with his wife and two children. Rob brings to the team, a wealth of knowledge in project management, SQL, software integration and geological data management. Welcome to the acQuire lunchtime Running Club, Rob!

Ed Grantham – Senior Geoscientific Data Analyst

Ed Grantham will be joining our Manchester team also as a Senior Geological Data Analyst in July. After graduating from Liverpool University with a Bachelor of Science, Ed then went

on to the Queen Mary, University of London to complete a Master of Science. Ed brings to acQuire a strong knowledge of SQL and data analysis within the energy sector. He will travel to Perth to participate in the GDA accreditation training with Rob for 3 months. He will then return to the UK to fill the shoes of Alex Gardiner, who has moved to our Johannesburg office. Ed has travelled extensively through Africa, Europe and Asia and we are keen to continue to fill his passport with site-based acQuire services!



Andréia Cristina Ruy – Geoscientific Data Analyst

In July, Andréia joined our Implementation and Support team in the Belo Horizonte, Brazil office. She has an M.Sc. in Geology and Applied Geophysics and Bachelor degree in Geology. Her studies involved geophysical characterisation (processing and interpretation) and integration with remote sensing and geologic data. Andréia has worked as an exploration geologist. Her principal expertise was with global exploration databases, organisation and information management platforms. We welcome Andréia to our global team.

acQuire Conference

This year's 2010 acQuire Conference will be held at the Duxton Hotel, Perth from the 4th – 12th November. There will be an array of presentation by key speakers, workshops and acQuire training sessions. Learn about the latest advances in the industry, and share your data management successes, lessons learned and experience of using acQuire software.

The conference dinner will be held on the 9th of November at the exquisite Matilda Bay Restaurant. The restaurant is situated on the banks of the picturesque Swan River and boasts panoramic views of the city and Kings Park.

If you register before the 4th of October 2010, you will receive an early bird reduced rate on conference days.



The graphic features a dark teal background with the year '2010' in large, light-colored font at the top. Below the year are four small images: a modern building at night, a person silhouetted against a sunset, two people in safety gear working on a site, and a sunset over water with sailboats. At the bottom right, the text reads 'acQuire Conference', '4 - 12 November 2010', and 'Duxton Hotel, St Georges Terrace, Perth'.